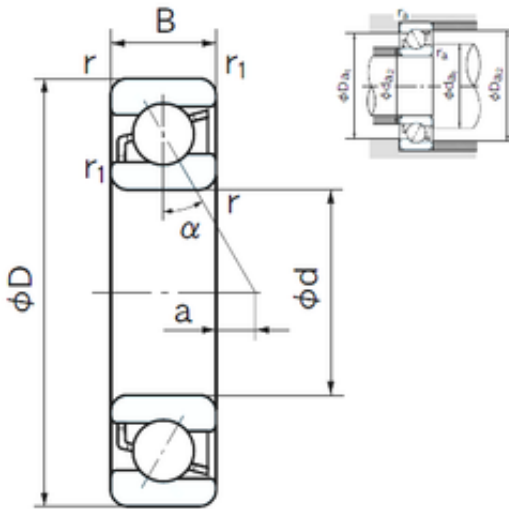




# FAG BEARING LIMITED



## 85 mm x 150 mm x 28 mm NACHI 7217 angular contact ball bearings

Bearing No. 7217

7217 Bearing 2D drawings and 3D CAD models

|                               |                  |
|-------------------------------|------------------|
| Size                          | 85x150x28 mm     |
| Bore Diameter                 | 85 mm            |
| Outer Diameter                | 150 mm           |
| Width                         | 28 mm            |
| d                             | 85 mm            |
| D                             | 150 mm           |
| B                             | 28 mm            |
| C                             | 28 mm            |
| Angle ( ° )                   | 30 °             |
| a                             | 19.9 mm          |
| r min.                        | 2 mm             |
| r1 min.                       | 1 mm             |
| da min.                       | 95 mm            |
| Da max.                       | 140 mm           |
| ra max.                       | 2 mm             |
| Weight                        | 1.87 Kg          |
| Basic dynamic load rating (C) | 103 kN           |
| Basic static load rating (C0) | 89,5 kN          |
| (Grease) Lubrication Speed    | 3800 r/min       |
| Configuration                 | Single Row       |
| Enclosure                     | Open             |
| Bore Type                     | Cylindrical Bore |
| Bore Size                     | 85 mm            |
| Outside Diameter              | 150 mm           |
| Width                         | 28 mm            |



## FAG BEARING LIMITED

|                         |           |
|-------------------------|-----------|
| Fillet Radius/Chamfer   | 2 mm      |
| r1                      | 1 mm      |
| Dynamic Load Rating     | 103,000 N |
| Static Load Rating      | 89,500 N  |
| Limiting Speed - Grease | 3,800 rpm |
| Limiting Speed - Oil    | 5,000 rpm |
| da1 (min)               | 95 mm     |
| da2 (min)               | 91 mm     |
| Da1 (max)               | 140 mm    |
| Da2 (max)               | 144 mm    |
| ra (max)                | 2 mm      |
| ra1 (max)               | 1 mm      |